



BOLLETTINO AGROMETEOROLOGICO

Settembre 2021



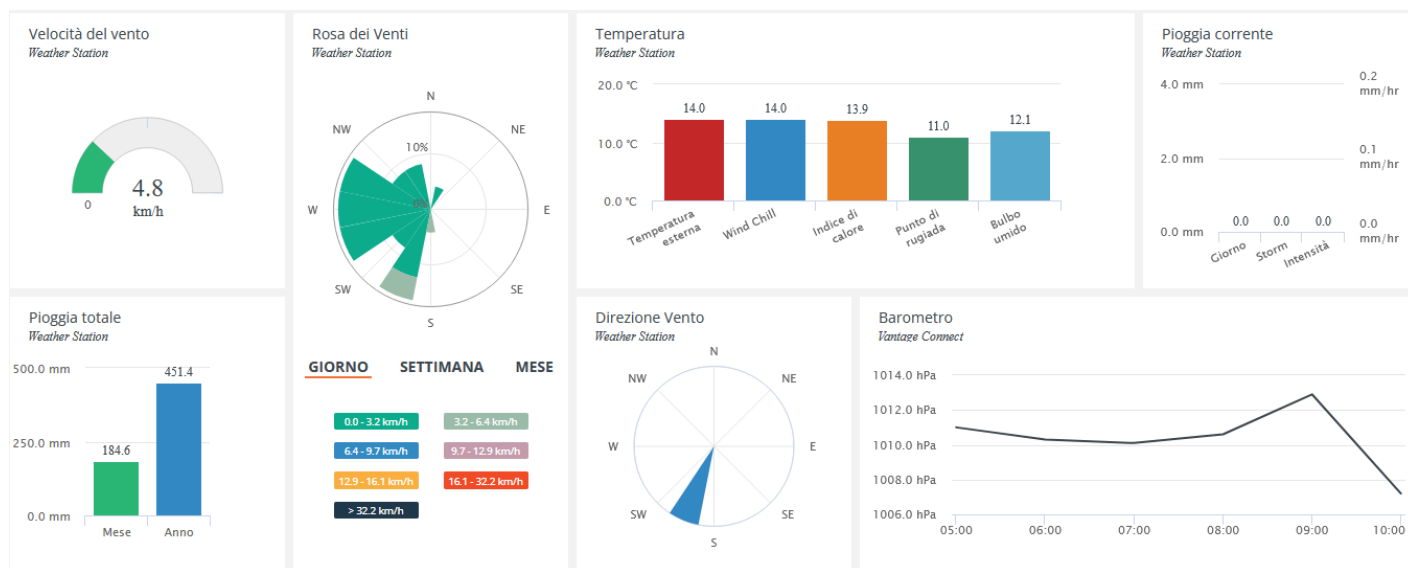
Fondo europeo agricolo per lo sviluppo rurale:
l'Europa investe nelle zone rurali





I bollettini Agrometeorologici vengono pubblicati con cadenza mensile sulla base delle informazioni raccolte in relazione a tre stazioni meteo installate nei pressi di Francavilla al Mare (CH), Vasto (CH) e Spaccarelli (CH).

Per avere accesso ai dati in tempo reale scrivici a questo indirizzo: info@poloagire.it



SEPTEMBER 2021
LOCAL CLIMATOLOGICAL DATA
 DAVIS INSTRUMENTS, WEATHERLINK NETWORK

Francavilla al Mare, Abruzzo ITA
Francavilla Galasso



Lat: 42.4270 Long: 14.2602 Elev (ground): 54 meters Time Zone: Europe/Rome

TEMPERATURE °C						DEG DAYS BASE 18.3°		PRECIP. (mm)	PRESSURE (hPa)		WIND SPEED = km/h DIR = DEGREES						Date	
Date	MAXIMUM	MINIMUM	AVERAGE	AVERAGE DEW PT	AVERAGE WET BULB	HEATING	COOLING	WATER EQUIV	AVERAGE STATION	AVERAGE SEA LEVEL	RESULTANT SPEED	RES DIR	AVERAGE SPEED	WIND MAX				
														INSTANT		ARCHIVE		
														SPEED	DIR	SPEED		DIR
01	25.2	17.1	21.5	17.6	18.7	0.095	3.282	0.0	1015.1	1015.8	1.4	67	3.2	24.1	158	6.4	45	01
02	24.8	16.1	20.7	15.0	16.6	0.333	2.734	0.0	1017.7	1018.5	1.4	141	1.6	19.3	158	6.4	135	02
03	25.1	16.0	20.7	15.0	16.6	0.475	2.812	0.0	1014.4	1015.1	1.7	145	1.6	22.5	158	8.0	135	03
04	25.3	15.8	20.7	16.0	17.4	0.521	2.854	0.0	1010.8	1011.5	2.3	163	1.6	16.1	135	6.4	135	04
05	25.7	17.2	21.6	17.5	18.6	0.137	3.377	0.0	1012.1	1012.8	1.3	64	3.2	22.5	90	6.4	68	05
06	26.3	17.4	21.8	16.6	18.0	0.023	3.523	0.0	1015.2	1016.0	2.6	29	3.2	20.9	338	6.4	22	06
07	25.9	17.2	21.4	15.9	17.5	0.187	3.213	0.0	1015.8	1016.6	1.6	50	3.2	20.9	90	8.0	45	07
08	25.6	15.5	20.5	16.5	17.6	0.620	2.764	0.0	1013.9	1014.6	1.2	152	1.6	16.1	180	6.4	90	08
09	24.8	15.4	20.4	16.7	17.8	0.618	2.671	0.0	1012.3	1013.0	2.6	177	3.2	17.7	158	8.0	135	09
10	25.5	14.8	21.1	17.1	18.2	0.634	3.352	0.0	1011.8	1012.6	2.7	174	1.6	22.5	158	8.0	158	10
11	25.6	17.1	21.3	18.0	18.9	0.102	3.118	0.0	1011.4	1012.1	1.4	147	1.6	14.5	158	6.4	135	11
12	25.8	15.2	20.8	17.1	18.1	0.579	3.076	0.0	1010.4	1011.1	0.9	132	1.6	19.3	360	6.4	90	12
13	26.6	15.4	21.0	16.4	17.7	0.549	3.208	0.0	1011.3	1012.1	0.9	153	1.6	19.3	90	6.4	90	13
14	27.5	14.8	21.5	14.6	16.5	0.706	3.861	0.0	1012.3	1013.0	1.8	184	1.6	12.9	158	4.8	112	14
15	27.7	16.7	22.8	14.8	16.9	0.141	4.569	0.0	1013.0	1013.7	1.8	191	1.6	12.9	135	4.8	225	15
16	28.0	20.2	24.1	18.9	20.2	0.000	5.727	0.0	1011.3	1012.0	0.8	65	1.6	19.3	112	6.4	68	16
17	31.4	19.6	25.6	18.0	19.8	0.000	7.289	0.0	1006.8	1007.6	1.4	231	1.6	24.1	270	4.8	225	17
18	26.3	19.1	22.6	18.7	19.7	0.000	4.245	0.0	1007.9	1008.6	2.2	158	1.6	20.9	158	8.0	158	18
19	26.6	16.1	22.8	17.4	18.8	0.204	4.718	0.0	1006.6	1007.3	2.7	183	3.2	27.4	158	9.7	158	19
20	25.7	19.2	22.7	13.9	16.2	0.000	4.333	0.0	1008.8	1009.5	1.8	148	3.2	25.7	158	11.3	135	20
21	24.1	15.9	20.0	15.5	16.8	0.331	2.009	0.0	1016.1	1016.8	1.2	73	3.2	20.9	90	8.0	90	21
22	23.0	14.3	19.2	12.1	14.3	0.593	1.449	0.0	1017.7	1018.5	3.2	19	3.2	20.9	90	6.4	338	22
23	22.2	12.9	17.4	11.6	13.5	1.845	0.958	0.0	1017.4	1018.1	1.8	165	1.6	17.7	158	6.4	135	23
24	24.4	10.4	17.9	12.7	14.3	2.500	2.025	0.0	1014.4	1015.2	3.0	182	3.2	22.5	158	8.0	158	24
25	24.2	12.9	19.2	15.1	16.3	1.461	2.278	0.0	1015.8	1016.5	2.3	175	1.6	19.3	158	6.4	135	25
26	24.7	15.8	21.0	17.9	18.8	0.438	3.100	0.0	1015.1	1015.8	1.2	166	1.6	17.7	338	4.8	135	26
27	24.9	19.2	21.9	20.2	20.7	0.000	3.542	0.0	1012.2	1012.9	2.5	43	1.6	19.3	90	6.4	45	27
28	24.1	17.3	21.3	19.1	19.7	0.058	3.032	5.8	1013.8	1014.5	3.9	45	3.2	20.9	360	6.4	45	28
29	24.2	15.2	19.4	17.2	17.9	0.778	1.889	0.0	1012.7	1013.4	1.6	175	1.6	14.5	158	4.8	90	29
30	24.1	16.4	19.8	17.1	17.9	0.435	1.949	0.0	1016.0	1016.7	1.0	56	1.6	20.9	90	6.4	45	30
	25.5	16.2	21.1	16.3	17.7	1.034	5.818		1013.0	1013.7	1.9	128.43	2.2	< Monthly Avg				
NUMBER OF DAYS WITH: >						Maximum Temp ≥ 32.2: 0 Minimum Temp ≤ 0: 0		Minimum Temp ≤ 0: 0 Minimum Temp ≤ -17.7: 0		Precipitation ≥ 0.2 mm: 1 Precipitation ≥ 2.0 mm: 1			Greatest 24 - hr precipitation: 5.8 Date: 27-28 Monthly Total Precipitation: 5.8					
SEA LEVEL PRESSURE: >						MAXIMUM: 1019.9 MINIMUM: 1004.9		DATE 2 11:00 19 20:00		DEGREEE DAYS: >			MONTHLY TOTAL HEATING: 25.850 COOLING: 174.529		SEASON TO DATE TOTAL 370.537 1357.129			

SEPTEMBER 2021
Francavilla al Mare, Abruzzo ITA

SEPTEMBER 2021

LOCAL CLIMATOLOGICAL DATA

DAVIS INSTRUMENTS, WEATHERLINK NETWORK

, Abruzzo ITA
Lanciano Eredi Legonziano



Lat: 42.2266 Long: 14.3454 Elev (ground): 237 meters Time Zone: Europe/Rome

TEMPERATURE °C						DEG DAYS BASE 18.3°		PRECIP. (mm)	PRESSURE (hPa)		WIND SPEED = km/h DIR = DEGREES						Date	
Date	MAXIMUM	MINIMUM	AVERAGE	AVERAGE DEW PT	AVERAGE WET BULB	HEATING	COOLING	WATER EQUIV	AVERAGE STATION	AVERAGE SEA LEVEL	RESULTANT SPEED	RES DIR	AVERAGE SPEED	WIND MAX				
														INSTANT		ARCHIVE		
														SPEED	DIR	SPEED		DIR
01	25.8	14.9	20.3	16.4	17.5	0.637	2.646	0.4	995.4	996.1	0.9	43	0.0	14.5	22	3.2	22	01
02	25.3	15.7	20.2	14.1	15.8	0.576	2.481	0.0	998.0	998.8	1.6	34	0.0	17.7	158	3.2	22	02
03	25.9	15.4	20.2	14.0	15.8	0.644	2.542	0.0	994.6	995.4	0.8	66	1.6	12.9	68	3.2	22	03
04	26.4	15.7	20.4	15.7	17.0	0.502	2.532	0.0	991.2	991.9	0.6	60	0.0	14.5	68	3.2	45	04
05	26.4	16.4	21.0	16.1	17.4	0.410	3.056	0.0	992.8	993.5	1.6	39	0.0	16.1	45	4.8	22	05
06	26.8	17.1	21.5	15.2	16.9	0.072	3.201	0.0	995.8	996.6	1.4	44	1.6	14.5	22	3.2	22	06
07	26.6	15.6	20.9	14.1	16.0	0.528	3.088	0.0	996.3	997.0	0.6	80	1.6	14.5	360	4.8	22	07
08	26.7	15.4	20.7	14.5	16.2	0.699	3.019	0.0	994.4	995.1	0.6	85	0.0	12.9	68	3.2	22	08
09	26.4	15.7	20.7	15.1	16.6	0.627	2.977	0.0	992.7	993.5	0.7	103	0.0	14.5	135	3.2	45	09
10	28.9	15.5	21.8	15.1	16.8	0.444	3.884	0.0	992.4	993.1	1.1	141	0.0	14.5	135	3.2	45	10
11	27.4	16.8	21.2	16.3	17.6	0.252	3.144	0.0	991.6	992.4	0.9	56	0.0	12.9	90	3.2	45	11
12	27.7	15.4	20.9	15.5	16.9	0.764	3.331	0.0	990.8	991.6	1.1	32	0.0	12.9	68	3.2	22	12
13	28.4	15.4	21.8	14.1	16.1	0.488	3.995	0.0	991.9	992.6	0.4	84	1.6	12.9	68	3.2	180	13
14	31.7	15.6	23.2	10.9	13.9	0.280	5.104	0.0	992.9	993.6	0.5	137	0.0	11.3	112	3.2	22	14
15	31.5	18.4	24.5	11.3	14.6	0.000	6.185	0.0	993.7	994.5	0.5	115	1.6	12.9	135	3.2	180	15
16	33.3	20.3	25.1	15.8	18.0	0.000	6.808	0.0	992.1	992.8	0.6	142	1.6	12.9	22	3.2	180	16
17	29.7	19.2	24.8	16.1	18.2	0.000	6.486	4.4	988.2	989.0	0.4	203	1.6	24.1	315	4.8	315	17
18	28.1	16.8	21.9	16.7	18.1	0.150	3.748	0.0	988.3	989.0	1.3	141	0.0	14.5	158	3.2	135	18
19	29.4	16.1	22.6	16.2	17.8	0.412	4.676	0.0	987.5	988.2	1.7	156	1.6	16.1	90	4.8	135	19
20	27.1	16.1	21.5	13.0	15.3	0.236	3.363	0.0	989.1	989.8	0.7	144	1.6	22.5	248	3.2	270	20
21	24.4	15.3	19.1	15.0	16.3	0.653	1.412	0.0	996.1	996.9	0.9	38	0.0	14.5	90	4.8	22	21
22	23.1	13.5	18.3	10.7	13.1	1.194	1.176	0.0	997.7	998.5	1.6	35	1.6	17.7	68	4.8	22	22
23	23.3	12.9	17.5	10.8	12.9	1.991	1.130	0.0	997.4	998.1	0.7	83	0.0	12.9	68	3.2	135	23
24	28.9	12.2	19.3	10.4	12.8	2.032	2.972	0.0	994.6	995.3	1.4	167	1.6	17.7	135	4.8	135	24
25	28.1	13.8	20.6	13.5	15.4	0.951	3.183	0.0	996.1	996.8	1.0	128	0.0	14.5	112	3.2	135	25
26	28.7	15.7	21.8	16.3	17.8	0.451	3.956	0.0	995.7	996.4	0.5	113	0.0	12.9	180	3.2	22	26
27	29.6	18.0	22.2	18.2	19.2	0.005	3.889	0.0	992.6	993.3	0.6	48	0.0	12.9	68	3.2	22	27
28	24.6	16.9	20.2	18.2	18.7	0.194	2.102	28.0	994.1	994.8	1.3	26	0.0	14.5	22	3.2	22	28
29	26.5	14.8	20.1	16.2	17.3	0.822	2.549	0.0	993.4	994.1	0.4	121	0.0	12.9	135	1.6	180	29
30	24.2	16.1	19.3	16.5	17.4	0.479	1.479	0.0	996.5	997.2	0.8	38	0.0	14.5	68	3.2	22	30
	27.4	15.9	21.1	14.7	16.4	1.100	6.007		993.5	994.2	0.9	90.09	1.6	< Monthly Avg				
NUMBER OF DAYS WITH: >						Maximum Temp ≥ 32.2: 1 Maximum Temp ≤ 0: 0		Minimum Temp ≤ 0: 0 Minimum Temp ≤ -17.7: 0		Precipitation ≥ 0.2 mm: 3 Precipitation ≥ 2.0 mm: 2			Greatest 24 - hr precipitation: 28.0 Date: 27-28 Monthly Total Precipitation: 32.8					
SEA LEVEL PRESSURE: >						MAXIMUM: 1003.7 MINIMUM: 985.8		DATE 2 08:00 19 19:00		DEGREEE DAYS: >			MONTHLY TOTAL HEATING: 29.692 COOLING: 180.204		SEASON TO DATE TOTAL 438.600 1502.237			

SEPTEMBER 2021
, ABRUZZO ITA

SEPTEMBER 2021
LOCAL CLIMATOLOGICAL DATA
 DAVIS INSTRUMENTS, WEATHERLINK NETWORK

, Abruzzo ITA
Vasto Del Borrello



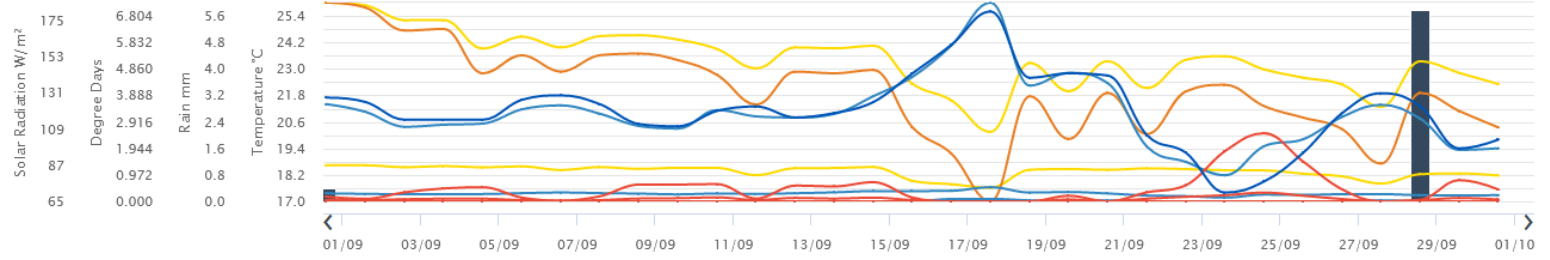
Lat: 42.1726 Long: 14.6826 Elev (ground): 39 meters Time Zone: Europe/Rome

TEMPERATURE °C						DEG DAYS BASE 18.3°		PRECIP. (mm)	PRESSURE (hPa)		WIND SPEED = km/h DIR = DEGREES							
Date	MAXIMUM	MINIMUM	AVERAGE	AVERAGE DEW PT	AVERAGE WET BULB	HEATING	COOLING	WATER EQUIV	AVERAGE STATION	AVERAGE SEA LEVEL	RESULTANT SPEED	RES DIR	AVERAGE SPEED	WIND MAX				Date
														INSTANT		ARCHIVE		
														SPEED	DIR	SPEED	DIR	
01	25.6	16.6	21.1	17.7	18.7	0.241	3.021	2.6	1015.9	1016.6	1.6	4	1.6	22.5	45	6.4	45	01
02	25.5	16.8	21.5	15.4	17.1	0.090	3.252	0.0	1018.8	1019.5	2.0	23	1.6	20.9	68	8.0	45	02
03	25.6	17.7	21.4	15.6	17.2	0.065	3.176	0.0	1015.5	1016.3	1.2	24	1.6	17.7	90	6.4	45	03
04	26.3	17.5	21.5	16.5	17.8	0.067	3.190	0.0	1011.9	1012.6	0.7	69	1.6	16.1	90	8.0	68	04
05	26.9	17.9	22.4	17.9	19.1	0.005	4.067	0.0	1013.2	1014.0	1.2	351	1.6	17.7	68	6.4	68	05
06	27.6	19.1	22.5	16.9	18.4	0.000	4.211	0.0	1016.1	1016.8	2.2	331	3.2	19.3	45	4.8	315	06
07	27.3	17.0	21.7	16.0	17.6	0.220	3.632	0.0	1016.8	1017.6	2.0	321	1.6	22.5	292	6.4	45	07
08	26.2	17.3	21.4	16.1	17.6	0.213	3.234	0.0	1015.1	1015.8	0.1	79	1.6	16.1	45	6.4	68	08
09	25.9	16.3	20.9	15.8	17.3	0.451	3.067	0.0	1013.5	1014.2	0.7	106	3.2	17.7	90	6.4	90	09
10	27.9	16.2	22.0	16.3	17.9	0.361	3.981	0.0	1013.1	1013.8	2.3	153	3.2	22.5	112	8.0	112	10
11	26.3	18.2	21.9	17.9	19.0	0.005	3.574	0.0	1012.5	1013.3	0.8	37	1.6	16.1	68	4.8	68	11
12	26.9	17.2	21.6	17.3	18.5	0.264	3.519	0.0	1011.5	1012.3	0.9	11	1.6	16.1	22	4.8	45	12
13	26.7	17.3	21.7	16.4	17.9	0.178	3.567	0.0	1012.5	1013.3	0.6	37	1.6	16.1	68	6.4	68	13
14	28.7	17.3	22.7	14.9	16.9	0.109	4.463	0.0	1013.6	1014.3	0.8	164	1.6	12.9	90	4.8	68	14
15	28.7	17.8	23.4	15.8	17.8	0.012	5.090	0.0	1014.3	1015.0	0.5	119	1.6	12.9	68	4.8	45	15
16	28.7	20.8	24.2	18.6	20.0	0.000	5.817	0.0	1012.4	1013.1	0.4	4	1.6	17.7	68	6.4	45	16
17	31.9	20.3	24.9	18.1	19.7	0.000	6.588	1.0	1008.2	1008.9	1.7	258	1.6	25.7	248	8.0	248	17
18	27.6	17.8	22.7	18.6	19.7	0.012	4.356	0.0	1009.1	1009.9	1.0	109	1.6	17.7	90	8.0	90	18
19	28.7	17.5	23.3	18.5	19.8	0.097	5.100	0.0	1008.0	1008.7	2.2	182	3.2	25.7	248	8.0	112	19
20	27.8	18.5	23.0	16.0	17.9	0.000	4.657	0.0	1009.9	1010.6	2.2	112	3.2	22.5	112	8.0	112	20
21	24.7	17.6	20.9	15.9	17.3	0.062	2.625	0.0	1017.0	1017.8	1.9	21	3.2	20.9	68	8.0	45	21
22	23.4	16.9	19.8	12.4	14.6	0.176	1.664	0.0	1018.6	1019.3	3.0	20	3.2	20.9	68	8.0	45	22
23	22.4	14.9	18.9	11.4	13.7	0.889	1.419	0.0	1018.5	1019.2	3.2	49	3.2	22.5	45	9.7	68	23
24	27.0	13.7	19.6	12.6	14.7	1.546	2.794	0.0	1015.7	1016.5	2.2	175	3.2	20.9	180	8.0	112	24
25	26.6	14.3	20.5	15.2	16.8	0.794	2.984	0.0	1017.0	1017.7	1.7	151	1.6	19.3	158	6.4	90	25
26	26.2	17.0	21.8	17.8	18.9	0.181	3.620	0.0	1016.1	1016.8	0.9	131	1.6	17.7	180	4.8	68	26
27	28.2	18.9	22.9	20.3	21.0	0.000	4.556	0.0	1013.3	1014.0	1.2	25	1.6	19.3	45	8.0	45	27
28	24.5	18.7	21.6	19.6	20.1	0.000	3.234	22.8	1014.7	1015.5	1.9	9	1.6	22.5	45	4.8	45	28
29	24.4	15.9	20.2	17.4	18.2	0.532	2.368	0.0	1013.9	1014.6	0.2	110	1.6	14.5	68	4.8	68	29
30	25.3	17.0	20.9	17.7	18.6	0.250	2.782	0.0	1017.0	1017.7	1.3	1	1.6	20.9	68	6.4	45	30
	26.7	17.3	21.8	16.6	18.0	0.511	6.577		1014.1	1014.9	1.4	106.34	2.1	< Monthly Avg				
NUMBER OF DAYS WITH: >						Maximum Temp ≥ 32.2: 0 Maximum Temp ≤ 0: 0		Minimum Temp ≤ 0: 0 Minimum Temp ≤ -17.7: 0		Precipitation ≥ 0.2 mm: 3 Precipitation ≥ 2.0 mm: 2			Greatest 24 - hr precipitation: 22.8 Date: 27-28 Monthly Total Precipitation: 26.4					
SEA LEVEL PRESSURE: >						MAXIMUM: 1021.3 MINIMUM: 1005.8		DATE 2 13:00 19 20:00		DEGREEE DAYS: >			MONTHLY TOTAL HEATING: 12.275 COOLING: 197.296		SEASON TO DATE TOTAL 316.046 1442.692			

SEPTEMBER 2021
, Abruzzo ITA

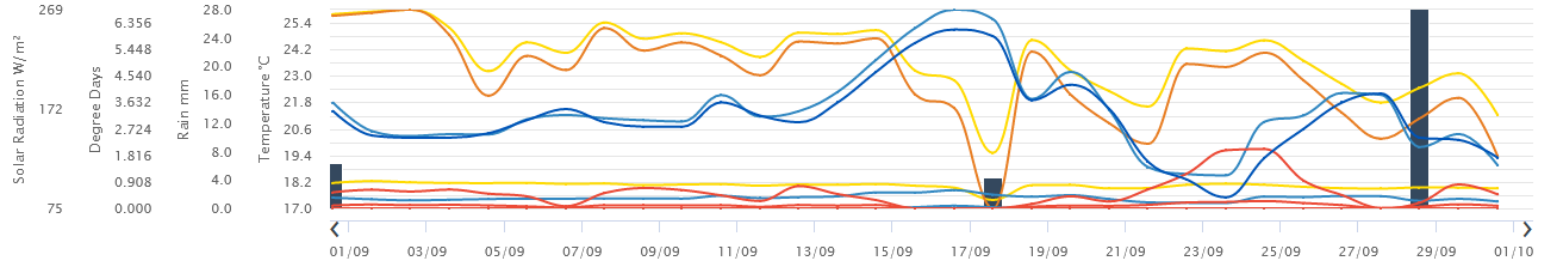
Francavilla

■ Temp. Media ■ Pioggia ■ GradiGiorno Riscaldamento ■ High Heating Degree Days ■ Low Heating Degree Days ■ GradiGiorno Raffreddamento ■ High Cooling Degree Days
■ Low Cooling Degree Days ■ Avg Solar Rad ■ Avg Solar Energy ■ High Solar Energy ■ Low Solar Energy



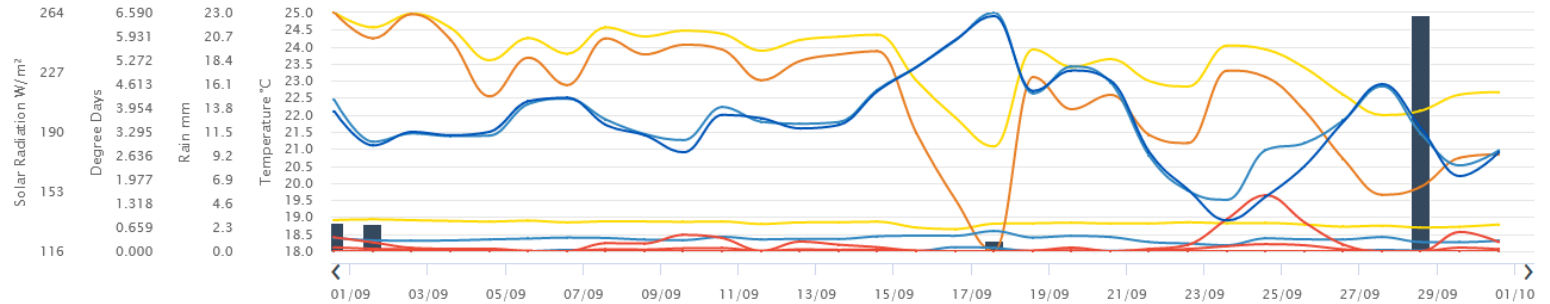
Lanciano

■ Temp. Media ■ Pioggia ■ GradiGiorno Riscaldamento ■ High Heating Degree Days ■ Low Heating Degree Days ■ GradiGiorno Raffreddamento ■ High Cooling Degree Days
■ Low Cooling Degree Days ■ Avg Solar Rad ■ Avg Solar Energy ■ High Solar Energy ■ Low Solar Energy



Vasto

■ Temp. Media ■ Pioggia ■ GradiGiorno Riscaldamento ■ High Heating Degree Days ■ Low Heating Degree Days ■ GradiGiorno Raffreddamento ■ High Cooling Degree Days
■ Low Cooling Degree Days ■ Avg Solar Rad ■ Avg Solar Energy ■ High Solar Energy ■ Low Solar Energy





AGROFENOLOGIA

(VITE)

Per le varietà precoci le operazioni di raccolta sono terminate nel mese mentre per le varietà medio tardive le fasi di raccolta sono ancora in corso. Le condizioni atmosferiche registrate, temperature nella media stagionale e quasi completa assenza di precipitazioni, non hanno interferito sulla concentrazione degli zuccheri. La carenza idrica ha avuto delle conseguenze sulle produzioni in termini quantitativi ma rispetto all'aspetto qualitativo si registrano valutazioni positive. Per la Cococciola le fasi di raccolta sono appena iniziate, visto comunque il grado di acidità registrato è possibile, in alcuni casi, attendere ancora qualche giorno per arrivare ad una migliore maturazione.

OPERAZIONI AGRONOMICHE E INTERVENTI FITOSANITARI SUGGERITI

Non si registrano situazioni di criticità

Oidio: la difesa verso questo patogeno è quasi del tutto conclusa. Laddove però le operazioni di vendemmia siano state completamente concluse, può essere utile, viste anche le buone condizioni meteo, attuare delle operazioni di difesa a beneficio della prossima annata. Bisogna considerare, infatti, che se nel vigneto non si è riusciti a contenere l'oidio, il prossimo anno tale patologia si presenterà ancora più virulenta. Ciò in quanto si sommeranno le spore (eventualmente) prodotte nell'anno in corso con quelle che si sono formate in questa ultima parte dell'anno e che riusciranno a passare l'inverno sotto forma di spore di resistenza (cleistotecie) sui tralci e sulle foglie a terra, oppure sotto forma di micelio direttamente all'interno delle gemme.

Botrite: non sono state registrate infezioni. Si consiglia comunque di continuare il monitoraggio soprattutto in funzione del tempo atmosferico. In caso di peggioramenti potrebbero stabilirsi condizioni favorevoli a questa fitopatia. Si raccomanda a questo proposito di richiedere l'accesso ai dati in tempo reale delle stazioni meteo.

Tignoletta della vite (*Lobesia botrana*): nel corso del mese sono state segnalate poche catture.

Tignola rigata (*Cryptoblabes gnidiella*): le catture registrate sono in crescita



Agire Soc. Cons. a r.l.
P.Iva 01776590679
Via Isidoro e Lepido Facii snc - 64100 Sant'Atto - Teramo
info@poloagire.it; - Tel.: +39 0861 232435
www.poloagire.it